



RELIABILITY DIALED IN

HVAC/R PARTS & COMPONENTS

CATALOG

FAMILY OWNED SINCE 1964 | PHOENIX, ARIZONA | 800.350.3425



CONTENTS

MOTORS

PSC DIRECT DRIVE BLOWER MOTORS.....1

PSC CONDENSER FAN MOTORS.....2-3

COMPONENTS

MOTOR RUN CAPACITORS.....4-7

DEFINITE PURPOSE CONTACTORS

 PROFESSIONAL SERIES CONTACTORS8-10

 COMMERCIAL SERIES CONTACTORS.....11-13

CONTACTOR REPLACEMENT COILS

 PROFESSIONAL SERIES REPLACEMENT COILS.....14

 COMMERCIAL SERIES REPLACEMENT COILS.....15

AUXILIARY SWITCHES

 PROFESSIONAL SERIES AUXILIARY SWITCHES & ACCESSORIES16

 COMMERCIAL SERIES AUXILIARY SWITCHES & ACCESSORIES.....17

RELAYS

 FAN / GENERAL-PURPOSE RELAYS.....18

 POWER RELAYS19

 POTENTIAL RELAYS.....20

TRANSFORMERS21

INSTALLATION

HVAC WHIPS & CONDUITS.....22-23

AC DISCONNECTS

 TOP OPEN DISCONNECTS.....24

 SIDE OPEN DISCONNECTS.....25

SURGE PROTECTIVE DEVICES

 SURGE PROTECTIVE DEVICE.....26

 SURGE-GUARD DISCONNECT.....27

EQUIPMENT PADS & PANS

 POLARPAD28-29

 POLARPAN30-31



OVERVIEW

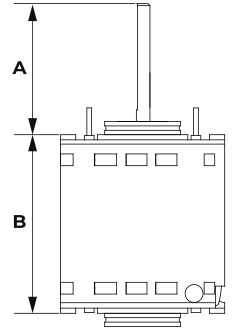
Dial® direct drive motors are engineered with performance, reliability, and convenience in mind. 100% copper windings improve efficiency, optimize heat dissipation, and provide maximum durability and reliability. In addition, Dial® copper wound motors feature an average service factor greater than 1.0 and can easily handle extra loads beyond the nameplate rating for short periods of time without sustaining damage. This is particularly beneficial during voltages fluctuations. Dial® direct drive motors are backed by a 2-year warranty.

SPECIFICATIONS

- 60°C Ambient
- 60 Hz / Single Phase
- Open Air Over Construction
- Auto Thermal Protection
- NEMA 48 Frame
- 36" Leads
- UL Recognized

FEATURES

- Precision Ball Bearings deliver long-lasting, maintenance-free performance.
- Heavy-Gauge Rolled Steel Shells reduce belly band deformation and stator damage.
- 100% Copper Windings reduce operating temperatures and extend life expectancy.
- Average Service Factors Exceed 1.0 allowing momentary operation above nameplate rating.
- 2-Year Warranty



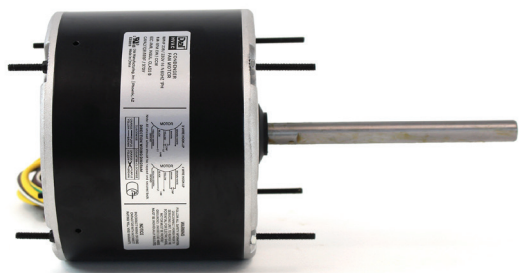
SINGLE HORSEPOWER

Dial No.	HP	Voltage	RPM / Speeds	Rotation	Amps	Required Capacitor	Shaft Diameter	Shell Diameter	Dimension	
									A	B
24583	1/4	115V	1075 / 3	Reversible	3.8	5µF / 370V	0.50"	5.6"	4.43"	4.21"
24584	1/4	208 / 230V	1075 / 3	Reversible	1.8	5µF / 370V	0.50"	5.6"	4.43"	4.21"
24585	1/3	115V	1075 / 3	Reversible	5.0	5µF / 370V	0.50"	5.6"	4.45"	4.47"
24586	1/3	208 / 230V	1075 / 3	Reversible	2.7	5µF / 370V	0.50"	5.6"	4.45"	4.47"
24587	1/2	115V	1075 / 3	Reversible	7.0	10µF / 370V	0.50"	5.6"	4.45"	5.22"
24588	1/2	208 / 230V	1075 / 3	Reversible	3.2	7.5µF / 370V	0.50"	5.6"	4.45"	5.22"
24589	3/4	115V	1075 / 3	Reversible	10.0	15µF / 370V	0.50"	5.6"	4.43"	5.50"
24590	3/4	208 / 230V	1075 / 3	Reversible	4.5	10µF / 370V	0.50"	5.6"	4.43"	5.50"
24595	1	115V	1075 / 3	Reversible	12.6	20µF / 370V	0.50"	5.6"	4.43"	6.10"
24596	1	208 / 230V	1075 / 3	Reversible	5.2	15µF / 370V	0.50"	5.6"	4.43"	6.10"

MULTI-HORSEPOWER

Dial No.	HP	Voltage	RPM / Speeds	Rotation	Amps	Required Capacitor	Shaft Diameter	Shell Diameter	Dimension	
									A	B
24463	1/2 - 1/6	115V	1075 / 4	Reversible	7.0	10µF / 370V	0.50"	5.6"	4.98"	4.84"
24464	1/2 - 1/6	208 / 230V	1075 / 4	Reversible	3.0	10µF / 370V	0.50"	5.6"	4.98"	4.84"
24466	3/4 - 1/5	115V	1075 / 4	Reversible	9 / 7.1	20µF/10µF / 370V	0.50"	5.6"	5.51"	6.10"
24467	3/4 - 1/5	208 / 230V	1075 / 4	Reversible	4.9 / 4.3	20µF / 370V @ 208V 10µF / 370V @ 230V	0.50"	5.6"	5.51"	6.10"

OVERVIEW



Dial® condenser fan motors are engineered with performance, reliability, and convenience in mind. Long 42" leads ensure every installation goes smoothly. 100% copper windings improve efficiency, optimize heat dissipation, and provide maximum durability and reliability. In addition, Dial® copper wound motors feature an average service factor greater than 1.0 and can easily handle extra loads beyond the nameplate rating for short periods of time without sustaining damage. This is particularly beneficial during voltages fluctuations and temporary restrictions in condenser fins. Dial® condenser fan motors are backed by a 2-year warranty.

SPECIFICATIONS

60°C or 70°C Ambient

60 Hz / Single Phase

Totally Enclosed Air Over Construction

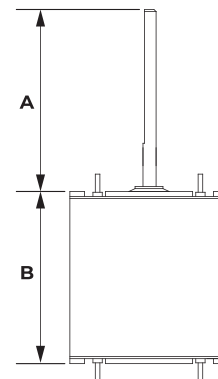
Auto Thermal Protection

NEMA 48 Frame

UL Recognized

FEATURES

- 42" Leads for trouble-free installation.
- Weather-Resistant Shells resist corrosion.
- Precision Ball Bearings deliver long-lasting, maintenance-free performance.
- 100% Copper Windings reduce operating temperatures and extend life expectancy.
- Average Service Factors Exceed 1.0 allowing momentary operation above nameplate rating.
- Mounting Holes compatible with Rheem / Ruud condensers.
- 2-Year Warranty



60°C RATED - SINGLE HORSEPOWER

Dial No.	HP	Voltage	RPM / Speeds	Rotation	Amps	Required Capacitor	Shaft Diameter	Shell Diameter	Dimension	
									A	B
24727	1/6	208 / 230V	1075 / 1	Reversible	1.2	5µF / 370	0.50"	5.6"	6.44"	4.25"
24728	1/4	208 / 230V	1075 / 1	Reversible	1.8	5µF / 370	0.50"	5.6"	6.44"	4.25"
24729	1/3	208 / 230V	1075 / 1	Reversible	2.4	7.5µF / 370	0.50"	5.6"	5.89"	4.53"
24730	1/2	208 / 230V	1075 / 1	Reversible	3.2	10µF / 370	0.50"	5.6"	6.44"	5.47"
24731	3/4	208 / 230V	1075 / 1	Reversible	4.4	10µF / 370	0.50"	5.6"	5.50"	5.75"
24403	1/6	208 / 230V	825 / 1	Reversible	1.3	5µF / 370	0.50"	5.6"	5.98"	4.25"
24404	1/4	208 / 230V	825 / 1	Reversible	1.5	7.5µF / 370	0.50"	5.6"	6.0"	4.92"
24405	1/3	208 / 230V	825 / 1	Reversible	2.0	10µF / 370	0.50"	5.6"	6.0"	5.63"

60°C RATED - MULTI-HORSEPOWER

Dial No.	HP	Voltage	RPM / Speeds	Rotation	Amps	Required Capacitor	Shaft Diameter	Shell Diameter	Dimension	
									A	B
24458	1/3 - 1/6	208 / 230V	1075 / 1	Reversible	2.7	5µF / 370	0.50"	5.6"	4.90"	4.53"
24465	1/3 - 1/6	208 / 230V	1075 / 2	Reversible	2.7 / 1.5	7.5µF / 370V @ 208V 5µF / 370V @ 230V	0.50"	5.6"	4.96"	4.53"
24468	1/2 - 1/5	208 / 230V	1075 / 2	Reversible	3.8 / 1.5	12.5µF / 370V @ 208V 10µF / 370V @ 230V	0.50"	5.6"	4.96"	5.31"
24459	1/3 - 1/6	208 / 230V	825 / 1	Reversible	2.1	7.5µF / 370	0.50"	5.6"	4.96"	5.31"
24469	1/3 - 1/6	208 / 230V	825 / 2	Reversible	1.9 / 1.2	10µF / 370V @ 208V 7.5µF / 370V @ 230V	0.50"	5.6"	4.96"	5.31"

70°C RATED - SINGLE HORSEPOWER

Dial No.	HP	Voltage	RPM / Speeds	Rotation	Amps	Required Capacitor	Shaft Diameter	Shell Diameter	Dimension	
									A	B
29727	1/6	208 / 230V	1075 / 1	Reversible	1.2	5µF / 370	0.50"	5.6"	6.44"	4.25"
29728	1/4	208 / 230V	1075 / 1	Reversible	1.8	5µF / 370	0.50"	5.6"	6.44"	4.25"
29729	1/3	208 / 230V	1075 / 1	Reversible	2.4	7.5µF / 370	0.50"	5.6"	5.89"	4.53"
29730	1/2	208 / 230V	1075 / 1	Reversible	3.2	10µF / 370	0.50"	5.6"	6.44"	5.47"
29731	3/4	208 / 230V	1075 / 1	Reversible	4.4	10µF / 370	0.50"	5.6"	5.50"	5.75"
29403	1/6	208 / 230V	825 / 1	Reversible	1.3	5µF / 370	0.50"	5.6"	5.98"	4.25"
29404	1/4	208 / 230V	825 / 1	Reversible	1.5	7.5µF / 370	0.50"	5.6"	6.0"	4.92"
29405	1/3	208 / 230V	825 / 1	Reversible	2.0	10µF / 370	0.50"	5.6"	6.0"	5.63"
29736	1/4	460V	1075 / 1	Reversible	0.8	7.5µF / 370	0.50"	5.6"	6.97"	4.25"
29737	1/3	460V	1075 / 1	Reversible	1.12	7.5µF / 370	0.50"	5.6"	6.97"	5.31"
29738	1/2	460V	1075 / 1	Reversible	1.4	10µF / 370	0.50"	5.6"	6.97"	5.75"
29739	3/4	460V	1075 / 1	Reversible	2.9	10µF / 370	0.50"	5.6"	6.97"	6.10"
29859	1/6	460V	825 / 1	Reversible	TBD	TBD	0.50"	5.6"	TBD	TBD
29880	1/4	460V	825 / 1	Reversible	TBD	TBD	0.50"	5.6"	TBD	TBD
29881	1/3	460V	825 / 1	Reversible	TBD	TBD	0.50"	5.6"	TBD	TBD
29882	1/2	460V	825 / 1	Reversible	TBD	TBD	0.50"	5.6"	TBD	TBD

70°C RATED - MULTI-HORSEPOWER

Dial No.	HP	Voltage	RPM / Speeds	Rotation	Amps	Required Capacitor	Shaft Diameter	Shell Diameter	Dimension	
									A	B
29458	1/3 - 1/6	208 / 230V	1075 / 1	Reversible	2.7	5µF / 370	0.50"	5.6"	4.90"	4.53"
29465	1/3 - 1/6	208 / 230V	1075 / 2	Reversible	2.7 / 1.5	7.5µF / 370V @ 208V 5µF / 370V @ 230V	0.50"	5.6"	4.96"	4.53"
29468	1/2 - 1/5	208 / 230V	1075 / 2	Reversible	3.8 / 1.5	12.5µF / 370V @ 208V 10µF / 370V @ 230V	0.50"	5.6"	4.96"	5.31"
29459	1/3 - 1/6	208 / 230V	825 / 1	Reversible	2.1	7.5µF / 370	0.50"	5.6"	4.96"	5.31"
29469	1/3 - 1/6	208 / 230V	825 / 2	Reversible	1.9 / 1.2	10µF / 370V @ 208V 7.5µF / 370V @ 230V	0.50"	5.6"	4.96"	5.31"



OVERVIEW

Dial® capacitors are manufactured to deliver reliable, consistent performance for split phase HVAC/R motor and compressor applications. Designed to meet EIA-456A performance requirements, they offer an economical solution without compromising quality or durability. Dial® provides a complete range of single and dual ratings in round and oval aluminum cans, engineered for dependable operation and backed by an unmatched 10-year warranty.

SPECIFICATIONS

EIA-456A, 60,000 h (Operating Life)

OEM Approved

-40°C to 70°C Operating Temperature

370 / 440V

UL Recognized / CSA Certified

FEATURES

- Pressure Sensitive Interrupter safely disconnects the capacitor in the event of a failure.
- Non-PCB Oil fill for safe and environmentally compliant operation.
- Heavy-Duty Film for long-life motor-run applications.
- 10-Year Warranty

370V – ROUND – SINGLE RUN

Dial No.	Microfarad	Voltage	Can Dimensions	
			Height	Diameter
28101	3µF	370V	2.17"	1.57"
28102	4µF	370V	2.17"	1.57"
28103	5µF	370V	2.17"	1.57"
28104	6µF	370V	2.17"	1.57"
28105	7.5µF	370V	2.17"	1.57"
28106	10µF	370V	2.17"	1.77"
28107	12.5µF	370V	2.56"	1.77"
28108	15µF	370V	2.56"	1.77"
28109	16µF	370V	2.56"	1.77"
28110	17.5µF	370V	2.76"	1.97"
28111	20µF	370V	2.56"	1.77"
28112	25µF	370V	2.76"	1.97"
28113	30µF	370V	2.76"	1.97"
28114	35µF	370V	3.15"	1.97"
28115	40µF	370V	3.54"	1.97"
28116	45µF	370V	3.54"	1.97"
28117	50µF	370V	3.94"	1.97"
28118	55µF	370V	4.92"	1.97"
28119	60µF	370V	4.33"	1.97"
28120	65µF	370V	4.92"	2.17"
28121	70µF	370V	4.92"	2.17"
28122	80µF	370V	4.92"	2.36"
28123	100µF	370V	4.92"	2.36"

370V – OVAL – SINGLE RUN

Dial No.	Microfarad	Voltage	Can Dimensions		
			Height	Width	Depth
28401	2µF	370V	2.17"	2.01"	1.22"
28402	3µF	370V	2.17"	2.01"	1.22"
28403	4µF	370V	2.17"	2.01"	1.22"
28404	5µF	370V	2.17"	2.01"	1.22"
28405	6µF	370V	2.17"	2.01"	1.22"
28406	7.5µF	370V	2.17"	2.01"	1.22"
28407	10µF	370V	2.17"	2.01"	1.22"
28408	12.5µF	370V	2.76"	2.01"	1.22"
28409	15µF	370V	2.76"	2.01"	1.22"
28410	17.5µF	370V	2.76"	2.8"	1.77"
28411	20µF	370V	3.15"	2.01"	1.22"
28412	25µF	370V	2.76"	2.8"	1.77"
28413	30µF	370V	3.15"	2.8"	1.77"
28414	35µF	370V	3.54"	2.8"	1.77"
28415	40µF	370V	3.94"	2.8"	1.77"
28416	45µF	370V	3.94"	2.8"	1.77"
28417	50µF	370V	4.33"	2.8"	1.77"
28418	55µF	370V	4.92"	2.8"	1.77"
28419	60µF	370V	4.92"	2.8"	1.77"
28420	65µF	370V	4.92"	2.8"	1.77"
28421	70µF	370V	4.92"	2.8"	1.77"
28422	80µF	370V	4.92"	2.8"	1.77"

440V – ROUND – SINGLE RUN

Dial No.	Microfarad	Voltage	Can Dimensions	
			Height	Diameter
28140	2µF	440V	2.17"	1.57"
28141	3µF	440V	2.17"	1.57"
28142	4µF	440V	2.17"	1.57"
28143	5µF	440V	2.17"	1.57"
28144	6µF	440V	2.17"	1.57"
28145	7.5µF	440V	2.17"	1.57"
28146	10µF	440V	2.17"	1.77"
28147	12.5µF	440V	2.56"	1.77"
28148	15µF	440V	2.56"	1.77"
28149	17.5µF	440V	2.76"	1.97"
28150	20µF	440V	2.76"	1.97"
28151	25µF	440V	2.76"	1.97"

Dial No.	Microfarad	Voltage	Can Dimensions	
			Height	Diameter
28152	30µF	440V	3.15"	1.97"
28153	35µF	440V	3.54"	1.97"
28154	40µF	440V	3.94"	1.97"
28155	45µF	440V	4.33"	1.97"
28156	50µF	440V	4.33"	1.97"
28157	55µF	440V	4.92"	1.97"
28158	60µF	440V	4.92"	1.97"
28159	65µF	440V	4.92"	2.17"
28160	70µF	440V	4.92"	2.17"
28161	80µF	440V	4.92"	2.36"
28162	90µF	440V	4.92"	2.36"

440V – OVAL – SINGLE RUN

Dial No.	Microfarad	Voltage	Can Dimensions		
			Height	Width	Depth
28440	2µF	440V	2.17"	2.01"	1.22"
28441	2.5µF	440V	2.17"	2.01"	1.22"
28442	3µF	440V	2.17"	2.01"	1.22"
28443	4µF	440V	2.17"	2.01"	1.22"
28444	5µF	440V	2.17"	2.01"	1.22"
28445	6µF	440V	2.17"	2.01"	1.22"
28446	7.5µF	440V	2.17"	2.01"	1.22"
28447	10µF	440V	2.76"	2.01"	1.22"
28448	12.5µF	440V	2.76"	2.01"	1.22"
28449	15µF	440V	3.15"	2.01"	1.22"
28450	17.5µF	440V	2.76"	2.8"	1.77"
28451	20µF	440V	2.76"	2.8"	1.77"

Dial No.	Microfarad	Voltage	Can Dimensions		
			Height	Width	Depth
28452	25µF	440V	2.76"	2.8"	1.77"
28453	30µF	440V	3.15"	2.8"	1.77"
28454	35µF	440V	3.54"	2.8"	1.77"
28455	40µF	440V	3.94"	2.8"	1.77"
28456	45µF	440V	3.94"	2.8"	1.77"
28457	50µF	440V	4.33"	2.8"	1.77"
28458	55µF	440V	4.92"	2.8"	1.77"
28459	60µF	440V	4.92"	2.8"	1.77"
28460	65µF	440V	4.92"	2.8"	1.77"
28461	70µF	440V	4.92"	2.8"	1.77"
28462	75µF	440V	4.92"	2.8"	1.77"
28463	80µF	440V	4.92"	2.8"	1.77"

370V – ROUND – DUAL RUN

Dial No.	Microfarad	Voltage	Can Dimensions	
			Height	Diameter
28203	15 / 5µF	370V	2.76"	1.97"
28208	20 / 5µF	370V	2.76"	1.97"
28210	20 / 10µF	370V	3.15"	1.97"
28212	25 / 3µF	370V	3.15"	1.97"
28213	25 / 4µF	370V	3.15"	1.97"
28214	25 / 5µF	370V	3.15"	1.97"
28216	25 / 10µF	370V	3.54"	1.97"
28217	30 / 3µF	370V	3.54"	1.97"
28218	30 / 4µF	370V	3.54"	1.97"
28219	30 / 5µF	370V	3.15"	1.97"
28220	30 / 7.5µF	370V	3.54"	1.97"
28221	30 / 10µF	370V	3.94"	1.97"
28222	35 / 3µF	370V	3.94"	1.97"
28223	35 / 4µF	370V	3.94"	1.97"
28224	35 / 5µF	370V	3.54"	1.97"
28225	35 / 7.5µF	370V	3.94"	1.97"
28226	35 / 10µF	370V	4.33"	1.97"
28227	40 / 3µF	370V	3.94"	1.97"
28228	40 / 4µF	370V	4.33"	1.97"
28229	40 / 5µF	370V	3.54"	1.97"
28230	40 / 7.5µF	370V	4.33"	1.97"
28231	40 / 10µF	370V	4.33"	1.97"
28232	45 / 3µF	370V	4.33"	1.97"
28234	45 / 5µF	370V	3.94"	1.97"

Dial No.	Microfarad	Voltage	Can Dimensions	
			Height	Diameter
28235	45 / 7.5µF	370V	4.92"	1.97"
28236	45 / 10µF	370V	4.92"	1.97"
28237	50 / 3µF	370V	3.94"	1.97"
28238	50 / 5µF	370V	4.92"	1.97"
28239	50 / 7.5µF	370V	4.92"	1.97"
28240	50 / 10µF	370V	4.92"	1.97"
28241	55 / 5µF	370V	4.92"	1.97"
28242	55 / 7.5µF	370V	4.92"	1.97"
28243	55 / 10µF	370V	4.92"	1.97"
28245	60 / 5µF	370V	4.92"	1.97"
28246	60 / 7.5µF	370V	4.92"	2.17"
28247	60 / 10µF	370V	4.92"	2.17"
28248	65 / 5µF	370V	4.92"	2.17"
28249	70 / 5µF	370V	4.92"	2.36"
28250	70 / 7.5µF	370V	4.92"	2.36"
28251	70 / 10µF	370V	4.92"	2.36"
28252	75 / 5µF	370V	4.92"	2.36"
28254	75 / 10µF	370V	4.92"	2.36"
28255	80 / 5µF	370V	4.92"	2.36"
28256	80 / 7.5µF	370V	4.92"	2.36"
28257	80 / 10µF	370V	4.92"	2.36"
28259	85 / 5µF	370V	4.92"	2.36"
28260	85 / 7.5µF	370V	4.92"	2.36"

370V – OVAL – DUAL RUN

Dial No.	Microfarad	Voltage	Can Dimensions		
			Height	Width	Depth
28503	15 / 5µF	370V	2.76"	2.8"	1.77"
28507	20 / 3µF	370V	2.76"	2.8"	1.77"
28508	20 / 4µF	370V	2.76"	2.8"	1.77"
28509	20 / 5µF	370V	3.15"	2.8"	1.77"
28510	20 / 10µF	370V	3.15"	2.8"	1.77"
28511	20 / 15µF	370V	3.54"	2.8"	1.77"
28514	25 / 5µF	370V	3.15"	2.8"	1.77"
28516	25 / 10µF	370V	3.54"	2.8"	1.77"
28518	30 / 3µF	370V	3.54"	2.8"	1.77"
28520	30 / 5µF	370V	3.54"	2.8"	1.77"
28521	30 / 7.5µF	370V	3.54"	2.8"	1.77"
28523	35 / 3µF	370V	3.54"	2.8"	1.77"
28525	35 / 5µF	370V	3.94"	2.8"	1.77"

Dial No.	Microfarad	Voltage	Can Dimensions		
			Height	Width	Depth
28526	35 / 7.5µF	370V	3.94"	2.8"	1.77"
28527	35 / 10µF	370V	3.94"	2.8"	1.77"
28530	40 / 5µF	370V	3.94"	2.8"	1.77"
28531	40 / 7.5µF	370V	4.33"	2.8"	1.77"
28532	45 / 5µF	370V	4.33"	2.8"	1.77"
28533	45 / 7.5µF	370V	4.33"	2.8"	1.77"
28534	45 / 10µF	370V	4.92"	2.8"	1.77"
28535	45 / 15µF	370V	3.94"	2.8"	1.77"
28538	55 / 7.5µF	370V	4.33"	2.8"	1.77"
28540	60 / 7.5µF	370V	4.92"	2.8"	1.77"
28541	60 / 10µF	370V	4.33"	2.8"	1.77"
28543	80 / 5µF	370V	4.92"	2.8"	1.77"
28544	80 / 7.5µF	370V	4.92"	2.8"	1.77"

440V – ROUND – DUAL RUN

Dial No.	Microfarad	Voltage	Can Dimensions	
			Height	Diameter
28301	10 / 5µF	440V	2.76"	1.97"
28302	15 / 5µF	440V	2.76"	1.97"
28304	20 / 5µF	440V	2.76"	1.97"
28305	20 / 7.5µF	440V	3.15"	1.97"
28306	20 / 10µF	440V	3.15"	1.97"
28308	25 / 3µF	440V	3.15"	1.97"
28309	25 / 4µF	440V	3.15"	1.97"
28310	25 / 5µF	440V	3.15"	1.97"
28311	25 / 7.5µF	440V	3.54"	1.97"
28312	25 / 10µF	440V	3.54"	1.97"
28314	30 / 3µF	440V	3.54"	1.97"
28315	30 / 4µF	440V	3.54"	1.97"
28316	30 / 5µF	440V	3.54"	1.97"
28317	30 / 7.5µF	440V	3.54"	1.97"
28318	30 / 10µF	440V	3.94"	1.97"
28319	35 / 3µF	440V	3.94"	1.97"
28320	35 / 4µF	440V	3.94"	1.97"
28321	35 / 5µF	440V	3.94"	1.97"
28322	35 / 6µF	440V	3.94"	1.97"
28323	35 / 7.5µF	440V	3.94"	1.97"
28324	35 / 10µF	440V	4.33"	1.97"
28325	40 / 3µF	440V	3.94"	1.97"
28326	40 / 4µF	440V	4.33"	1.97"
28327	40 / 5µF	440V	4.33"	1.97"
28328	40 / 6µF	440V	4.33"	1.97"
28329	40 / 7.5µF	440V	4.33"	1.97"
28330	40 / 10µF	440V	4.33"	1.97"
28331	45 / 3µF	440V	4.33"	1.97"
28332	45 / 4µF	440V	4.33"	1.97"
28333	45 / 5µF	440V	4.33"	1.97"

Dial No.	Microfarad	Voltage	Can Dimensions	
			Height	Diameter
28335	45 / 6µF	440V	4.92"	1.97"
28336	45 / 7.5µF	440V	4.92"	1.97"
28337	45 / 10µF	440V	4.92"	1.97"
28338	50 / 5µF	440V	4.92"	1.97"
28339	50 / 7.5µF	440V	4.92"	1.97"
21339	50 / 10µF	440V	4.92"	1.97"
28341	55 / 5µF	440V	4.92"	1.97"
28342	55 / 7.5µF	440V	4.92"	2.17"
28343	55 / 10µF	440V	4.92"	2.17"
28344	60 / 3µF	440V	4.92"	2.17"
28345	60 / 5µF	440V	4.92"	2.17"
28346	60 / 7.5µF	440V	4.92"	2.17"
28347	60 / 10µF	440V	4.92"	2.17"
28348	60 / 12µF	440V	4.92"	2.17"
28349	65 / 5µF	440V	4.92"	2.17"
28350	65 / 7.5µF	440V	4.92"	2.17"
28351	65 / 10µF	440V	4.92"	2.17"
28352	70 / 5µF	440V	4.92"	2.36"
28353	70 / 7.5µF	440V	4.92"	2.36"
28354	70 / 10µF	440V	4.92"	2.36"
28355	75 / 5µF	440V	4.92"	2.36"
28356	75 / 7.5µF	440V	4.92"	2.36"
28357	75 / 10µF	440V	4.92"	2.36"
28358	80 / 5µF	440V	4.92"	2.36"
28359	80 / 7.5µF	440V	4.92"	2.36"
28360	80 / 10µF	440V	4.92"	2.36"
28361	85 / 5µF	440V	4.92"	2.36"
28362	85 / 7.5µF	440V	4.92"	2.36"
28363	85 / 10µF	440V	4.92"	2.36"

440V – OVAL – DUAL RUN

Dial No.	Microfarad	Voltage	Can Dimensions		
			Height	Width	Depth
28551	5 / 5µF	440V	2.76"	2.8"	1.77"
28553	10 / 10µF	440V	2.76"	2.8"	1.77"
28554	15 / 4µF	440V	2.76"	2.8"	1.77"
28555	15 / 5µF	440V	2.76"	2.8"	1.77"
28556	20 / 5µF	440V	3.15"	2.8"	1.77"
28557	20 / 15µF	440V	3.54"	2.8"	1.77"
28558	25 / 5µF	440V	3.15"	2.8"	1.77"
28562	30 / 5µF	440V	3.54"	2.8"	1.77"
28564	30 / 10µF	440V	3.94"	2.8"	1.77"
28565	35 / 3µF	440V	3.54"	2.8"	1.77"
28566	35 / 4µF	440V	3.94"	2.8"	1.77"
28567	35 / 5µF	440V	3.94"	2.8"	1.77"
28568	35 / 7.5µF	440V	3.94"	2.8"	1.77"

Dial No.	Microfarad	Voltage	Can Dimensions		
			Height	Width	Depth
28569	35 / 10µF	440V	3.94"	2.8"	1.77"
28570	40 / 3µF	440V	3.94"	2.8"	1.77"
28571	40 / 5µF	440V	3.94"	2.8"	1.77"
28572	40 / 7.5µF	440V	4.33"	2.8"	1.77"
28573	40 / 10µF	440V	4.33"	2.8"	1.77"
28574	45 / 5µF	440V	4.33"	2.8"	1.77"
28575	45 / 7.5µF	440V	4.33"	2.8"	1.77"
28576	50 / 5µF	440V	4.92"	2.8"	1.77"
28578	55 / 5µF	440V	4.92"	2.8"	1.77"
28580	60 / 5µF	440V	4.92"	2.8"	1.77"
28581	60 / 7.5µF	440V	4.92"	2.8"	1.77"
28583	80 / 5µF	440V	4.92"	2.8"	1.77"
28584	80 / 7.5µF	440V	4.92"	2.8"	1.77"

COMPONENTS



OVERVIEW

Dial® Professional Series DP contactors offer HVAC service technicians a balance of performance and value. Dial® Professional Series DP contactors feature 100% copper coils that keep operation cooler and ensure consistent, dependable pull-in, silver cadmium oxide contacts that deliver long-lasting durability, and high-conductivity brass and copper hardware that maintains cooler temperatures and supports efficient, reliable performance.

SPECIFICATIONS

- A2L Compliant
- 40°C to 60°C Ambient
- Universal Fitment
- UL Recognized / CSA Certified

FEATURES

- Silver Cadmium Oxide Contacts are the most durable contacts available, for long-lasting, reliable performance.
- 100% Copper Coils reduce operating temperatures and ensure consistent pull-in performance.
- High-Conductivity brass and copper hardware maintains cooler operating temperatures.

1 / 1.5 POLES – 20-40 AMP

Dial No.	Poles	Coil Voltage	Termination	Body Type	FLA	LRA				RES	Horsepower Rating			
						@240V	@277V	@480V	@600V		1PH @240V	3PH @277V	3PH @480V	3PH @640V
70121	1.5	24	Box Lug	Standard Body	25	150	150	125	100	35	2	5	7.5	15
70122	1.5	120	Box Lug	Standard Body	25	150	150	125	100	35	2	5	7.5	15
70123	1.5	240	Box Lug	Standard Body	25	150	150	125	100	35	2	5	7.5	15
70131	1.5	24	Box Lug	Standard Body	30	180	180	150	120	40	3	5	10	20
70132	1.5	120	Box Lug	Standard Body	30	180	180	150	120	40	3	5	10	20
70133	1.5	240	Box Lug	Standard Body	30	180	180	150	120	40	3	5	10	20
70136	1.5	24	Screw Type	Standard Body	30	180	180	150	120	40	3	5	10	20
70137	1.5	120	Screw Type	Standard Body	30	180	180	150	120	40	3	5	10	20
70138	1.5	240	Screw Type	Standard Body	30	180	180	150	120	40	3	5	10	20
70141	1.5	24	Box Lug	Standard Body	40	240	240	200	160	50	3	7.5	20	25
70142	1.5	120	Box Lug	Standard Body	40	240	240	200	160	50	3	7.5	20	25
70143	1.5	240	Box Lug	Standard Body	40	240	240	200	160	50	3	7.5	20	25

2 POLES – 20-40 AMP

Dial No.	Poles	Coil Voltage	Termination	Body Type	FLA	LRA				RES	Horsepower Rating			
						@240V	@277V	@480V	@600V		1PH @240V	3PH @277V	3PH @480V	3PH @640V
70211	2	24	Box Lug	Standard Body	20	120	120	100	80	30	1.5	3	7.5	7.5
70212	2	120	Box Lug	Standard Body	20	120	120	100	80	30	1.5	3	7.5	7.5
70213	2	240	Box Lug	Standard Body	20	120	120	100	80	30	1.5	3	7.5	7.5
70216	2	24	Screw Type	Standard Body	20	120	120	100	80	30	1.5	3	7.5	7.5
70217	2	120	Screw Type	Standard Body	20	120	120	100	80	30	1.5	3	7.5	7.5
70218	2	240	Screw Type	Standard Body	20	120	120	100	80	30	1.5	3	7.5	7.5
70221	2	24	Box Lug	Standard Body	25	150	150	125	100	35	2	5	7.5	15
70222	2	120	Box Lug	Standard Body	25	150	150	125	100	35	2	5	7.5	15
70223	2	240	Box Lug	Standard Body	25	150	150	125	100	35	2	5	7.5	15
70226	2	24	Screw Type	Standard Body	25	150	150	125	100	35	2	5	7.5	15
70227	2	120	Screw Type	Standard Body	25	150	150	125	100	35	2	5	7.5	15
70228	2	240	Screw Type	Standard Body	25	150	150	125	100	35	2	5	7.5	15
70231	2	24	Box Lug	Standard Body	30	180	180	150	120	40	3	5	10	20
70232	2	120	Box Lug	Standard Body	30	180	180	150	120	40	3	5	10	20
70233	2	240	Box Lug	Standard Body	30	180	180	150	120	40	3	5	10	20
70234	2	277	Box Lug	Standard Body	30	180	180	150	120	40	3	5	10	20
70236	2	24	Screw Type	Standard Body	30	180	180	150	120	40	3	5	10	20
70237	2	120	Screw Type	Standard Body	30	180	180	150	120	40	3	5	10	20
70238	2	240	Screw Type	Standard Body	30	180	180	150	120	40	3	5	10	20
70241	2	24	Box Lug	Standard Body	40	240	240	200	160	50	3	7.5	20	25
70242	2	120	Box Lug	Standard Body	40	240	240	200	160	50	3	7.5	20	25
70243	2	240	Box Lug	Standard Body	40	240	240	200	160	50	3	7.5	20	25
70244	2	277	Box Lug	Standard Body	40	240	240	200	160	50	3	7.5	20	25

3 POLES – 20-40 AMP

Dial No.	Poles	Coil Voltage	Termination	Body Type	FLA	LRA				RES	Horsepower Rating		
						@240V	@277V	@480V	@600V		3PH @277V	3PH @480V	3PH @640V
70321	3	24	Box Lug	Standard Body	25	150	150	125	100	35	5	7.5	15
70322	3	120	Box Lug	Standard Body	25	150	150	125	100	35	5	7.5	15
70323	3	240	Box Lug	Standard Body	25	150	150	125	100	35	5	7.5	15
70331	3	24	Box Lug	Standard Body	30	180	180	150	120	40	5	10	20
70332	3	120	Box Lug	Standard Body	30	180	180	150	120	40	5	10	20
70333	3	240	Box Lug	Standard Body	30	180	180	150	120	40	5	10	20
70334	3	277	Box Lug	Standard Body	30	180	180	150	120	40	5	10	20
70335	3	480	Box Lug	Standard Body	30	180	180	150	120	40	5	10	20
70336	3	24	Screw Type	Standard Body	30	180	180	150	120	40	5	10	20
70337	3	120	Screw Type	Standard Body	30	180	180	150	120	40	5	10	20
70338	3	240	Screw Type	Standard Body	30	180	180	150	120	40	5	10	20
70341	3	24	Box Lug	Standard Body	40	240	240	200	160	50	7.5	20	25
70342	3	120	Box Lug	Standard Body	40	240	240	200	160	50	7.5	20	25
70343	3	240	Box Lug	Standard Body	40	240	240	200	160	50	7.5	20	25
70344	3	277	Box Lug	Standard Body	40	240	240	200	160	50	7.5	20	25
70345	3	480	Box Lug	Standard Body	40	240	240	200	160	50	7.5	20	25

4 POLES – 20-40 AMP

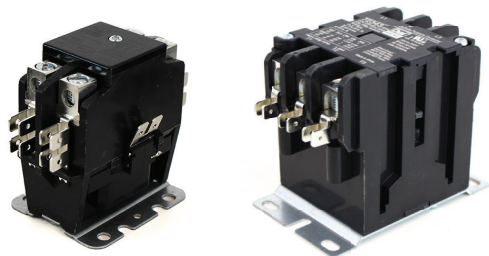
Dial No.	Poles	Coil Voltage	Termination	Body Type	FLA	LRA				RES	Horsepower Rating			
						@240V	@277V	@480V	@600V		1PH @240V	3PH @277V	3PH @480V	3PH @640V
70431	4	24	Box Lug	Standard Body	30	180	180	150	120	40	3	5	10	20
70432	4	120	Box Lug	Standard Body	30	180	180	150	120	40	3	5	10	20
70433	4	240	Box Lug	Standard Body	30	180	180	150	120	40	3	5	10	20
70435	4	480	Box Lug	Standard Body	30	180	180	150	120	40	3	5	10	20
70441	4	24	Box Lug	Standard Body	40	240	240	200	160	50	3	7.5	20	25
70442	4	120	Box Lug	Standard Body	40	240	240	200	160	50	3	7.5	20	25
70443	4	240	Box Lug	Standard Body	40	240	240	200	160	50	3	7.5	20	25
70445	4	480	Box Lug	Standard Body	40	240	240	200	160	50	3	7.5	20	25

3 POLES – 50-60 AMP

Dial No.	Poles	Coil Voltage	Termination	Body Type	FLA	LRA				RES	Horsepower Rating		
						@240V	@277V	@480V	@600V		3PH @277V	3PH @480V	3PH @640V
70351	3	24	Box Lug	Standard Body	50	300	240	240	200	65	7.5	25	25
70352	3	120	Box Lug	Standard Body	50	300	240	240	200	65	7.5	25	25
70353	3	240	Box Lug	Standard Body	50	300	240	240	200	65	7.5	25	25
70355	3	480	Box Lug	Standard Body	50	300	240	240	200	65	7.5	25	25
70361	3	24	Box Lug	Standard Body	60	360	240	300	240	75	15	30	30
70362	3	120	Box Lug	Standard Body	60	360	240	300	240	75	15	30	30
70363	3	240	Box Lug	Standard Body	60	360	240	300	240	75	15	30	30
70365	3	480	Box Lug	Standard Body	60	360	240	300	240	75	15	30	30

3 POLES – 75-90 AMP

Dial No.	Poles	Coil Voltage	Termination	Body Type	FLA	LRA			RES	Horsepower Rating		
						@240V	@277V	@480V		3PH @277V	3PH @480V	3PH @640V
70371	3	24	Box Lug	Standard Body	75	450	300	300	90	15	40	50
70372	3	120	Box Lug	Standard Body	75	450	300	300	90	15	40	50
70373	3	240	Box Lug	Standard Body	75	450	300	300	90	15	40	50
70391	3	24	Box Lug	Standard Body	90	540	360	360	120	20	50	60
70392	3	120	Box Lug	Standard Body	90	540	360	360	120	20	50	60
70393	3	240	Box Lug	Standard Body	90	540	360	360	120	20	50	60



OVERVIEW

Dial® Commercial Series DP contactors are engineered for optimum performance and durability making them the ideal choice for demanding commercial refrigeration, commercial HVAC, and other high-duty applications, requiring up to 250,000 electrical cycles and 1,000,000 mechanical cycles. OEM-grade silver cadmium oxide contacts, thermoset molded bodies, and fully shrouded magnets provide long-lasting, reliable performance, while 100% copper coils and high-conductivity hardware maintain cooler operation and consistent pull-in performance.

SPECIFICATIONS

- ARI 780 / 790

- A2L Compliant

- 40°C to 60°C Ambient

- Universal Fitment

- UL Recognized / CSA Certified

FEATURES

- OEM-Grade Silver Cadmium Oxide Contacts are the most durable contacts available, for long-lasting, reliable performance.
- Thermoset Molded Bodies are stronger than thermoplastic and resist warpage caused by heat generated in maximum current applications.
- Fully Shrouded Magnets help prevent damage from contaminants and insect penetration.
- 100% Copper Coils reduce operating temperatures and ensure consistent pull-in performance.
- High-Conductivity brass and copper hardware maintains cooler operating temperatures.

1 / 1.5 POLES – 20-40 AMP

Dial No.	Poles	Coil Voltage	Termination	Body Type	FLA	LRA				RES	Horsepower Rating			
						@240V	@277V	@480V	@600V		1PH @240V	3PH @277V	3PH @480V	3PH @640V
72121	1.5	24	Box Lug	Standard Body	25	150	150	125	100	35	2	5	7.5	15
72122	1.5	120	Box Lug	Standard Body	25	150	150	125	100	35	2	5	7.5	15
72123	1.5	240	Box Lug	Standard Body	25	150	150	125	100	35	2	5	7.5	15
72131	1.5	24	Box Lug	Standard Body	30	180	180	150	120	40	3	5	10	20
72132	1.5	120	Box Lug	Standard Body	30	180	180	150	120	40	3	5	10	20
72133	1.5	240	Box Lug	Standard Body	30	180	180	150	120	40	3	5	10	20
72136	1.5	24	Screw Type	Standard Body	30	180	180	150	120	40	3	5	10	20
72137	1.5	120	Screw Type	Standard Body	30	180	180	150	120	40	3	5	10	20
72138	1.5	240	Screw Type	Standard Body	30	180	180	150	120	40	3	5	10	20
72141	1.5	24	Box Lug	Standard Body	40	240	240	200	160	50	3	7.5	20	25
72142	1.5	120	Box Lug	Standard Body	40	240	240	200	160	50	3	7.5	20	25
72143	1.5	240	Box Lug	Standard Body	40	240	240	200	160	50	3	7.5	20	25

2 POLES – 20-40 AMP

Dial No.	Poles	Coil Voltage	Termination	Body Type	FLA	LRA				RES	Horsepower Rating			
						@240V	@277V	@480V	@600V		1PH @240V	3PH @277V	3PH @480V	3PH @640V
72221	2	24	Box Lug	Standard Body	25	150	150	125	100	35	2	5	7.5	15
72222	2	120	Box Lug	Standard Body	25	150	150	125	100	35	2	5	7.5	15
72223	2	240	Box Lug	Standard Body	25	150	150	125	100	35	2	5	7.5	15
72231	2	24	Box Lug	Standard Body	30	180	180	150	120	40	3	5	10	20
72232	2	120	Box Lug	Standard Body	30	180	180	150	120	40	3	5	10	20
72233	2	240	Box Lug	Standard Body	30	180	180	150	120	40	3	5	10	20
72236	2	24	Screw Type	Standard Body	30	180	180	150	120	40	3	5	10	20
72237	2	120	Screw Type	Standard Body	30	180	180	150	120	40	3	5	10	20
72238	2	240	Screw Type	Standard Body	30	180	180	150	120	40	3	5	10	20
72281	2	24	Box Lug	Large Body	30	180	180	150	120	40	3	5	10	20
72282	2	120	Box Lug	Large Body	30	180	180	150	120	40	3	5	10	20
72283	2	240	Box Lug	Large Body	30	180	180	150	120	40	3	5	10	20
72241	2	24	Box Lug	Standard Body	40	240	240	200	160	50	3	7.5	20	25
72242	2	120	Box Lug	Standard Body	40	240	240	200	160	50	3	7.5	20	25
72243	2	240	Box Lug	Standard Body	40	240	240	200	160	50	3	7.5	20	25
72291	2	24	Box Lug	Large Body	40	240	240	200	160	50	3	7.5	20	25
72292	2	120	Box Lug	Large Body	40	240	240	200	160	50	3	7.5	20	25
72293	2	240	Box Lug	Large Body	40	240	240	200	160	50	3	7.5	20	25

3 POLES – 20-40 AMP

Dial No.	Poles	Coil Voltage	Termination	Body Type	FLA	LRA				RES	Horsepower Rating			
						@240V	@277V	@480V	@600V		1PH @240V	3PH @277V	3PH @480V	3PH @640V
72331	3	24	Box Lug	Standard Body	30	180	180	150	120	40	3	5	10	20
72332	3	120	Box Lug	Standard Body	30	180	180	150	120	40	3	5	10	20
72333	3	240	Box Lug	Standard Body	30	180	180	150	120	40	3	5	10	20
72336	3	24	Screw Type	Standard Body	30	180	180	150	120	40	3	5	10	20
72337	3	120	Screw Type	Standard Body	30	180	180	150	120	40	3	5	10	20
72338	3	240	Screw Type	Standard Body	30	180	180	150	120	40	3	5	10	20
72341	3	24	Box Lug	Standard Body	40	240	240	200	160	50	3	7.5	20	25
72342	3	120	Box Lug	Standard Body	40	240	240	200	160	50	3	7.5	20	25
72343	3	240	Box Lug	Standard Body	40	240	240	200	160	50	3	7.5	20	25

4 POLES – 20-40 AMP

Dial No.	Poles	Coil Voltage	Termination	Body Type	FLA	LRA				RES	Horsepower Rating			
						@240V	@277V	@480V	@600V		1PH @240V	3PH @277V	3PH @480V	3PH @640V
72431	4	24	Box Lug	Standard Body	30	180	180	150	120	40	3	5	10	20
72432	4	120	Box Lug	Standard Body	30	180	180	150	120	40	3	5	10	20
72433	4	240	Box Lug	Standard Body	30	180	180	150	120	40	3	5	10	20
72441	4	24	Box Lug	Standard Body	40	240	240	200	160	50	3	7.5	20	25
72442	4	120	Box Lug	Standard Body	40	240	240	200	160	50	3	7.5	20	25
72443	4	240	Box Lug	Standard Body	40	240	240	200	160	50	3	7.5	20	25

3 POLES – 50-60 AMP

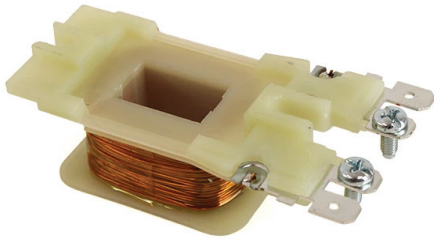
Dial No.	Poles	Coil Voltage	Termination	Body Type	FLA	LRA				RES	Horsepower Rating		
						@240V	@277V	@480V	@600V		3PH @277V	3PH @480V	3PH @640V
72351	3	24	Box Lug	Standard Body	50	300	300	250	200	65	7.5	25	25
72352	3	120	Box Lug	Standard Body	50	300	300	250	200	65	7.5	25	25
72353	3	240	Box Lug	Standard Body	50	300	300	250	200	65	7.5	25	25
72361	3	24	Box Lug	Standard Body	60	360	360	250	240	75	15	30	30
72362	3	120	Box Lug	Standard Body	60	360	360	250	240	75	15	30	30
72363	3	240	Box Lug	Standard Body	60	360	360	250	240	75	15	30	30

3 POLES – 75-90 AMP

Dial No.	Poles	Coil Voltage	Termination	Body Type	FLA	LRA				RES	Horsepower Rating		
						@240V	@277V	@480V	@600V		3PH @277V	3PH @480V	3PH @640V
72371	3	24	Box Lug	Standard Body	75	450	450	375	300	90	15	40	50
72372	3	120	Box Lug	Standard Body	75	450	450	375	300	90	15	40	50
72373	3	240	Box Lug	Standard Body	75	450	450	375	300	90	15	40	50
72391	3	24	Box Lug	Standard Body	90	540	540	375	360	120	20	50	60
72392	3	120	Box Lug	Standard Body	90	540	540	375	360	120	20	50	60
72393	3	240	Box Lug	Standard Body	90	540	540	375	360	120	20	50	60

OVERVIEW

Dial® Professional Series Replacement Coils for Professional Series DP contactors restore reliable operation without replacing the entire device.



SPECIFICATIONS

A2L Compliant

100% Copper Windings

UL Recognized / CSA Certified

3 POLES – 20-40 AMP

Dial No.	Poles	Contactor Amp Rating	Coil Voltage
70001	3	20-40A	24
70002	3	20-40A	120
70003	3	20-40A	240
70004	3	20-40A	277
70005	3	20-40A	480

3 POLES – 50-60 AMP

Dial No.	Poles	Contactor Amp Rating	Coil Voltage
70006	3	50-60A	24
70007	3	50-60A	120
70008	3	50-60A	240
70010	3	50-60A	480

3 POLES – 75-90 AMP

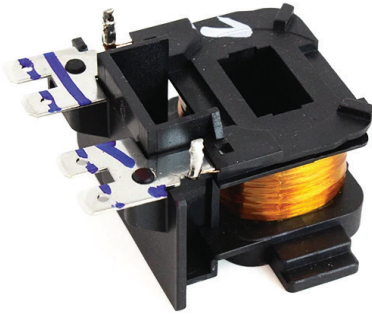
Dial No.	Poles	Contactor Amp Rating	Coil Voltage
70011	3	75-90A	24
70012	3	75-90A	120
70013	3	75-90A	240

4 POLES – 20-40 AMP

Dial No.	Poles	Contactor Amp Rating	Coil Voltage
70016	4	20-40A	24
70017	4	20-40A	120
70018	4	20-40A	240
70020	4	20-40A	480

OVERVIEW

Dial® Commercial Series Replacement Coils for Commercial Series DP contactors restore reliable operation without replacing the entire device.



SPECIFICATIONS

A2L Compliant

100% Copper Windings

UL Recognized / CSA Certified

3 POLES – 20-40 AMP

Dial No.	Poles	Contactor Amp Rating	Coil Voltage
72001	3	20-40A	24
72002	3	20-40A	120
72003	3	20-40A	240

3 POLES – 50-60 AMP

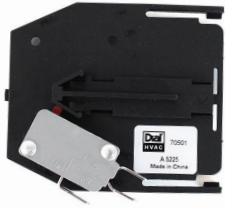
Dial No.	Poles	Contactor Amp Rating	Coil Voltage
72006	3	50-60A	24
72007	3	50-60A	120
72008	3	50-60A	240

3 POLES – 75-90 AMP

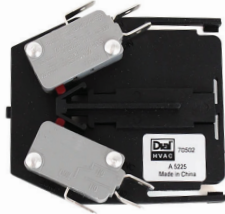
Dial No.	Poles	Contactor Amp Rating	Coil Voltage
72011	3	75-90A	24
72012	3	75-90A	120
72013	3	75-90A	240

4 POLES – 20-40 AMP

Dial No.	Poles	Contactor Amp Rating	Coil Voltage
72016	4	20-40A	24
72017	4	20-40A	120
72018	4	20-40A	240



DIAL NO. 70501



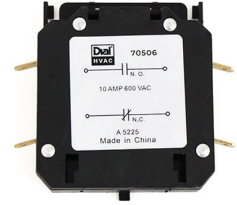
DIAL NO. 70502



DIAL NO. 70503



DIAL NO. 70505



DIAL NO. 70506

OVERVIEW

Dial® Professional Series Auxiliary Switches expand the control and flexibility of DP contactors, enabling precise signaling and control integration. Built for durability and reliable performance, Dial® Professional Series auxiliary switches integrate seamlessly with Professional Series DP contactors.

AUXILIARY SWITCHES – 25-40 AMP

Dial No.	Type	Compatible Contactors	
		Contactor Amp Rating	Contactor Poles
70501	SPDT Auxiliary Switch	25-40A	3 & 4 Pole
70502	DPDT Auxiliary Switch	25-40A	3 & 4 Pole
70505	Mechanical Interlock	25-40A	3 & 4 Pole
70506	NO/NC Auxiliary Switch	25-40A	3 & 4 Pole

AUXILIARY SWITCHES – 50-60 AMP

Dial No.	Type	Compatible Contactors	
		Contactor Amp Rating	Contactor Poles
70503	SPDT Auxiliary Switch	50-60A	3 Pole
70507	1 SPDT Auxiliary Switch	50-60A	3 Pole
70508	Auxiliary Switch Kit / Combo (Includes 70503 & 70506)	SPDT: 50-60A / NO/NC: 25-40A	3 & 4 Pole

AUXILIARY SWITCHES – 70-90 AMP

Dial No.	Type	Compatible Contactors	
		Contactor Amp Rating	Contactor Poles
70504	SPDT Auxiliary Switch	70-90A	3 Pole



DIAL NO. 72501



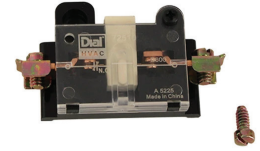
DIAL NO. 72505



DIAL NO. 72509



DIAL NO. 72507



DIAL NO. 72510

OVERVIEW

Dial® Commercial Series Auxiliary Switches and Accessories expand the control and flexibility of DP contactors, enabling precise signaling and control integration. Built for durability and reliable performance, Dial® Commercial Series auxiliary switches and accessories integrate seamlessly with Commercial Series DP contactors.

AUXILIARY SWITCHES			
Dial No.	Type	Compatible Contactors	
		Contactor Amp Rating	Contactor Poles
72501	SPST NC Auxiliary Contact Block	30-60A	3 & 4 Pole
72502	SPST NO Auxiliary Contact Block	30-60A	3 & 4 Pole
72503	DPST NC Auxiliary Contact Block	30-60A	3 & 4 Pole
72504	DPST NO Auxiliary Contact Block	30-60A	3 & 4 Pole
72505	DPST 1NC + 1NO Counter Contact Block	30-60A	3 & 4 Pole
72509	SPDT Auxiliary Switch	75-90A	3 Pole

ADDITIONAL ACCESSORIES			
Dial No.	Type	Compatible Contactors	
		Contactor Amp Rating	Contactor Poles
72506	SPDT Left Microswitch Block	30-60A	3 & 4 Pole
72507	SPDT Right Microswitch Block	30-60A	3 & 4 Pole
72508	DPDT Microswitch Block	30-60A	3 & 4 Pole
72510	Closed Auxiliary Contact	75-90A	3 Pole
72511	Open Auxiliary Contact	75-90A	3 Pole



OVERVIEW

Dial® General Purpose and Fan Relays are the everyday workhorses of HVAC control circuits, built to handle blower motors, fan cycling, and light duty switching with consistent reliability. High-conductivity copper and brass terminals minimize heat and voltage drop, while silver alloy contacts deliver long electrical life and stable switching performance. 100% copper coils ensure consistent pull-in and reduced operating temperatures, even in demanding applications.

SPECIFICATIONS

- A2L Compliant
- 40°C to 60°C Ambient
- 24V / 120V / 240V Coil Options
- SPST (NO, NO+NC) / SPDT Contact Options
- Panel Mount Steel Bracket
- UL Recognized / CSA Certified

FEATURES

- High-Conductivity copper and brass terminals reduce heat and minimize voltage drop.
- Silver Alloy Contacts provide long electrical life and stable switching.
- 100% Copper Coils ensure consistent pull-in performance and reduced operating temperatures.
- Universal Mounting Bracket fits most air handlers and furnaces.
- Open Frame Design improves heat dissipation in tight control cabinets.

FAN / GENERAL PURPOSE APPLICATIONS

Dial No.	Contact Form	Coil Voltage	Amperage	Mounting Style	Connection Type		Construction
					Primary	Secondary	
79290	SPST NO	24V	16A	Panel Mount	Quick Connect	Quick Connect	Molded
79291	SPST NO	120V	16A	Panel Mount	Quick Connect	Quick Connect	Molded
79292	SPST NO	240V	16A	Panel Mount	Quick Connect	Quick Connect	Molded
79293	SPDT	24V	16A	Panel Mount	Quick Connect	Quick Connect	Molded
79294	SPDT	120V	16A	Panel Mount	Quick Connect	Quick Connect	Molded
79295	SPDT	240V	16A	Panel Mount	Quick Connect	Quick Connect	Molded
79360	SPST NO	24V	18A	Panel Mount	Quick Connect	Quick Connect	Molded
79362	SPST NO	120V	18A	Panel Mount	Quick Connect	Quick Connect	Molded
79364	SPST NO	240V	18A	Panel Mount	Quick Connect	Quick Connect	Molded
79370	SPDT	24V	18A	Panel Mount	Quick Connect	Quick Connect	Molded
79372	SPDT	120V	18A	Panel Mount	Quick Connect	Quick Connect	Molded
79374	SPDT	240V	18A	Panel Mount	Quick Connect	Quick Connect	Molded
79380	SPST NO+NC	24V	18A	Panel Mount	Quick Connect	Quick Connect	Molded
79382	SPST NO+NC	120V	18A	Panel Mount	Quick Connect	Quick Connect	Molded
79384	SPST NO+NC	240V	18A	Panel Mount	Quick Connect	Quick Connect	Molded



OVERVIEW

Dial® Power Relays are designed for heavier loads and multi circuit control, giving you stable switching performance in demanding commercial and residential applications. The reinforced thermoset bodies resist heat and vibration, while heavy-duty silver cadmium oxide contacts support reliable high-load switching in equipment that cycles frequently.

SPECIFICATIONS

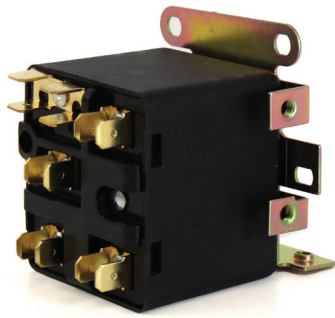
- A2L Compliant
- 25A Resistive / 15A Inductive @ 277 VAC
- 24V / 120V / 240V Coil Options
- DPDT and SPDT Contact Options
- Panel Mount Steel Bracket
- UL Recognized / CSA Certified

FEATURES

- Heavy-Duty Silver Cadmium Oxide Contacts for high load switching, delivering reliable performance under frequent cycling.
- Reinforced Thermoset Bodies resist heat and vibration.
- Fully Shrouded Coils reduce environmental contamination, improving long-term reliability.
- High Conductivity terminals maintain cooler operating temperatures.
- Universal Mounting Footprint for easy installation and compatibility across a wide range of equipment.

POWER SWITCHING APPLICATIONS

Dial No.	Contact Form	Coil Voltage	Amps @ 277V		Coil Voltage Thresholds			Mounting Style	Connection	Construction
			Resistive	Inductive	Pick-Up	Hold	Drop-Out			
79340	DPDT	24V	25A	15A	<=19.2VAC	19.2VAC	>=4.8VAC	Panel Mount	Quick Connect	Open
79341	DPDT	120V	25A	15A	<=96VAC	96VAC	>=24VAC	Panel Mount	Quick Connect	Open
79342	DPDT	240V	25A	15A	<=192VAC	192VAC	>=38.4VAC	Panel Mount	Quick Connect	Open
79343	SPDT	24V	25A	15A	<=19.2VAC	19.2VAC	>=4.8VAC	Panel Mount	Quick Connect	Open
79344	SPDT	120V	25A	15A	<=96VAC	96VAC	>=24VAC	Panel Mount	Quick Connect	Open
79345	SPDT	240V	25A	15A	<=192VAC	192VAC	>=38.4VAC	Panel Mount	Quick Connect	Open



OVERVIEW

Dial® Potential Relays provide precise start control for compressors and motors, using tightly wound sensing coils to deliver accurate pickup and dropout performance with consistent reliability. High-durability contacts are engineered to withstand repeated cycling. A steel mounting plate provides a rigid, vibration-resistant installation, maintaining stability and protecting the relay in demanding HVAC environments.

SPECIFICATIONS

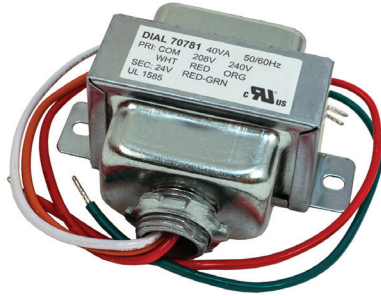
- A2L Compliant
- 35A Contact Rating
- 1/3 HP Rating
- Panel Mount Steel Bracket
- Coil Connection via Wire Leads
- Open-Frame Construction

FEATURES

- Precision Wound Sensing Coils ensure accurate and consistent pickup and dropout voltage ranges for reliable motor starting performance.
- Steel Mounting Plate provides rigid, vibration resistant installation.
- High Durability Contacts are built to withstand repeated compressor starts, delivering long-lasting, dependable operation under frequent cycling conditions.
- Quick Connect or Screw Terminal configurations are available by model, providing easy installation and reliable connections.

MOTOR START APPLICATIONS

Dial No.	Contact Rating	HP Rating	Coil Voltage Thresholds			Mounting Style	Coil Connection	Contact Terminal	Construction
			Pick-Up	Hold	Drop-Out				
79063	35A	1/3 HP	139-153V	170V	55V	Panel Mount	Wire Leads	Quick Connect	Open
79064	35A	1/3 HP	260-275V	395V	120V	Panel Mount	Wire Leads	Quick Connect	Open
79065	35A	1/3 HP	168-182V	332V	90V	Panel Mount	Wire Leads	Screw	Open
79066	35A	1/3 HP	215-225V	395V	120V	Panel Mount	Wire Leads	Screw	Open
79067	35A	1/3 HP	295-315V	420V	125V	Panel Mount	Wire Leads	Screw	Open
79068	35A	1/3 HP	325-345V	502V	135V	Panel Mount	Wire Leads	Screw	Open
79069	35A	1/3 HP	180-195V	336V	105V	Panel Mount	Wire Leads	Screw	Open
79071	35A	1/3 HP	212-232V	420V	121V	Panel Mount	Wire Leads	Screw	Open



SPECIFICATIONS

- A2L Compliant
- 40°C to 60°C Ambient
- 50/60 Hz Operation
- Open-Frame Construction
- Primary Taps: 120/208/240/277 VAC
- UL Recognized / CSA Certified

OVERVIEW

Dial® Control Transformers deliver stable low voltage power for furnaces, air handlers, condensers, and packaged units. Heavy-duty laminated steel cores ensure stable voltage under load, while reinforced copper windings offer long-term thermal durability. Multiple primary voltage taps provide flexibility for universal replacement applications. Built for reliability in demanding field conditions, these transformers provide clean, consistent output and durable construction for long service life.

FEATURES

- Heavy-Duty Laminated Steel Cores ensure stable voltage.
- Reinforced Copper Windings provide long term thermal durability.
- Integrated Primary Fuse Protection on select models safeguards connected equipment.
- Multiple Primary Voltage Taps provide flexibility and support universal replacement applications.
- Color-Coded Leads simplify installation and reduce wiring errors.
- Open-Frame and Foot Mount options ensure compatibility with a wide range of OEM equipment.

CLASS 2 – HVAC CONTROL APPLICATIONS

Dial No.	Voltages		VA Rating	Fused	Circuit Breaker	Mounting Style	Connection Type		Construction	Dimensions	
	Input	Output					Primary	Secondary		Width	Height
70701	120	24	40	No	No	Foot Mount	Wire Leads	Wire Leads	Open	2.15"	2.24"
70711	120/208/240	24	20	No	No	Foot Mount	Wire Leads	Wire Leads	Open	2"	2"
70712	120/208/240	24	40	No	No	Foot Mount	Wire Leads	Wire Leads	Open	2.15"	2.24"
70713	120/208/240	24	40	No	No	Foot Mount	Wire Leads	Wire Leads	Encapsulated	2.2"	2.3"
70714	120/208/240	24	40	Yes	Yes	Foot Mount	Wire Leads	Wire Leads	Encapsulated	2.3"	2.4"
70715	120/208/240	24	50	No	No	Foot Mount	Wire Leads	Wire Leads	Open	2.3"	2.5"
70716	120/208/240	24	60	No	No	Foot Mount	Wire Leads	Wire Leads	Open	2.4"	2.6"
70717	120/208/240	24/12/2	40	No	No	Foot Mount	Wire Leads	Wire Leads	Open	2.2"	2.3"
70721	120/208/240/480	24	50	Yes	Yes	Foot Mount	Wire Leads	Wire Leads	Open	2.3"	2.5"
70722	120/208/240/480	24	75	Yes	Yes	Foot Mount	Wire Leads	Wire Leads	Open	2.5"	2.7"
70723	120/240/480	24	75	Yes	Yes	Foot Mount	Wire Leads	Wire Leads	Encapsulated	2.6"	2.8"
70724	120/208/240/480	24	100	Yes	Yes	Foot Mount	Wire Leads	Wire Leads	Open	2.8"	3"
70731	120/208/240/575	24	65	No	No	Foot Mount	Wire Leads	Wire Leads	Open	2.5"	2.7"
70741	208/240	24	40	No	No	Foot Mount	Wire Leads	Wire Leads	Open	2.15"	2.24"
70742	277	24	40	No	No	Foot Mount	Wire Leads	Wire Leads	Open	2.15"	2.24"
70751	120	24	40	No	No	Multi-Mount	Wire Leads	Wire Leads	Open	2.15"	2.24"
70752	120	24	40	No	No	Multi-Mount Plate	Wire Leads	Wire Leads	Open	2.15"	2.24"
70761	120/208/240	24	40	No	No	Multi-Mount	Wire Leads	Wire Leads	Open	2.15"	2.24"
70762	120/208/240	24	50	No	No	Multi-Mount	Wire Leads	Wire Leads	Open	2.3"	2.5"
70763	120/208/240	24/12/2	48	No	No	Multi-Mount	Wire Leads	Wire Leads	Open	2.3"	2.5"
70771	120/208/240/480	24	75	Yes	Yes	Multi-Mount	Wire Leads	Wire Leads	Encapsulated	2.5"	2.7"
70781	208/240	24	40	No	No	Multi-Mount	Wire Leads	Wire Leads	Open	2.15"	2.24"
70782	208/240/480	24/120	100	Yes	Yes	Multi-Mount	Wire Leads	Wire Leads	Encapsulated	2.8"	3"



OVERVIEW

Dial® HVAC whips and conduit are designed to cut installation time without cutting corners. Every product offers durable and reliable construction to meet the quality demands of professional HVAC installations. Engineered for dependable performance, they provide a trusted solution for electrical routing and connections in both commercial and residential applications.

SPECIFICATIONS

- Assembled in the USA
- Conduit sizes: 1/2 in. and 3/4 in.
- Corrosion, Oil, and Water Resistant
- UV Resistant for Outdoor Exposure
- UL-Listed Components

FEATURES

- **Easy Installation** designed for efficient routing and connection in HVAC applications for faster setup.
- **Durable Construction** resists corrosion, oil, and water for extended service life.
- **Outdoor Rated UV-resistant** materials suitable for exterior installations.
- **Flexible Design** liquid-tight construction enables easy routing in confined spaces.

NON-METALLIC WHIPS

Dial No.	Length	Diameter	Conductors			Conduit Type	Connectors
			Size (AWG)	Type	Ground (AWG)		
75611	4'	1/2"	10	THHN	10	Non-Metallic	Non-Metallic, 1 Straight & 1 90° Reducing Washers Included
75612	4'	3/4"	8	THHN	10	Non-Metallic	Non-Metallic, 1 Straight & 1 90°
75621	6'	1/2"	10	THHN	10	Non-Metallic	Non-Metallic, 1 Straight & 1 90° Reducing Washers Included
75622	6'	3/4"	8	THHN	10	Non-Metallic	Non-Metallic, 1 Straight & 1 90°
75631	8'	1/2"	10	THHN	10	Non-Metallic	Non-Metallic, 1 Straight & 1 90° Reducing Washers Included
75632	8'	3/4"	8	THHN	10	Non-Metallic	Non-Metallic, 1 Straight & 1 90°
75641	10'	3/4"	8	THHN	10	Non-Metallic	Non-Metallic, 1 Straight & 1 90°

NON-METALLIC WHIPS - METALLIC CONNECTORS

Dial No.	Length	Diameter	Conductors			Conduit Type	Connectors
			Size (AWG)	Type	Ground (AWG)		
75671	4'	1/2"	10	THHN	10	Non-Metallic	Metallic, 1 Straight & 1 90° Reducing Washers Included
75672	4'	3/4"	8	THHN	10	Non-Metallic	Metallic, 1 Straight & 1 90°
75681	6'	1/2"	10	THHN	10	Non-Metallic	Metallic, 1 Straight & 1 90° Reducing Washers Included
75682	6'	3/4"	8	THHN	10	Non-Metallic	Metallic, 1 Straight & 1 90°

ALL METALLIC WHIPS

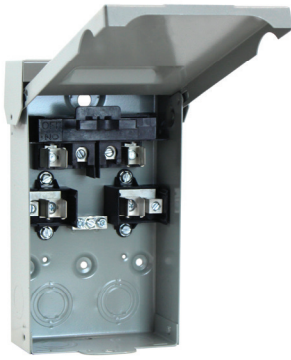
Dial No.	Length	Diameter	Conductors			Conduit Type	Connectors
			Size (AWG)	Type	Ground (AWG)		
75651	4'	1/2"	10	THHN	10	Metallic	Metallic, 1 Straight & 1 90° Reducing Washers Included
75652	4'	3/4"	8	THHN	10	Metallic	Metallic, 1 Straight & 1 90°
75661	6'	1/2"	10	THHN	10	Metallic	Metallic, 1 Straight & 1 90° Reducing Washers Included
75662	6'	3/4"	8	THHN	10	Metallic	Metallic, 1 Straight & 1 90°

NON-METALLIC CONDUIT ROLLS

Dial No.	Length	Diameter	Conduit Type	Connectors
75691	25'	1/2"	Non-Metallic	Not Included
75692	25'	3/4"	Non-Metallic	Not Included
75694	100'	1/2"	Non-Metallic	Not Included
75695	100'	3/4"	Non-Metallic	Not Included
75696	100'	1"	Non-Metallic	Not Included

METALLIC CONDUIT ROLLS

Dial No.	Length	Diameter	Conduit Type	Connectors
75697	100'	1/2"	Metallic	Not Included
75698	100'	3/4"	Metallic	Not Included



OVERVIEW

Dial® Top Open Metallic AC Disconnects are designed for fast, reliable installation in applications where space on either side of the box is limited. The cover and internal composite shield can be removed without tools, enabling quick, hassle-free access for inspection and service. Plated copper hardware ensures smooth operation, optimal conductivity, and long-term corrosion resistance. The NEMA 3R rain and sleet resistant powder-coated steel enclosure protects against rust and corrosion.

SPECIFICATIONS

120/240V / Single Phase

30A and 60A Ratings

NEMA 3R Metallic Enclosure

Copper and Aluminum Wire Compatible

cULus Listed

FEATURES

- **Easy Access Design**—cover and internal composite shield can be removed without tools.
- **Plated Copper Hardware** resists corrosion and ensures optimal conductivity and smooth operation.
- **Powder-Coated Galvanized Steel** enclosure resists corrosion and rust.
- **6 Multi-Size Knockouts** on 4 sides provide flexible installation options.

TOP OPEN AC DISCONNECTS

Dial No.	Description	Dimensions			Quantity
		Height	Width	Depth	
76110	60A Non-Fusible Disconnect	7.5"	5.2"	2.4"	10
76120	30A Fusible Disconnect	8.8"	5.2"	2.4"	10
76130	60A Fusible Disconnect	8.8"	5.2"	2.4"	10



AC DISCONNECTS — SIDE OPEN



OVERVIEW

Dial® Side Open Metallic AC Disconnects are designed for fast, reliable installation in applications where space above the box is limited. Reversible door hinges minimize fitment issues, while the wide-swing door (greater than 180°) provides easy access to internal connections. Fusible models include LED indicators that clearly illuminate when a fuse is missing or blown. The NEMA 3R rain and sleet resistant powder-coated steel enclosure protects against rust and corrosion.

SPECIFICATIONS

120/240V / Single Phase

30A and 60A Ratings

NEMA 3R Metallic Enclosure

Copper and Aluminum Wire Compatible

cULus Listed

FEATURES

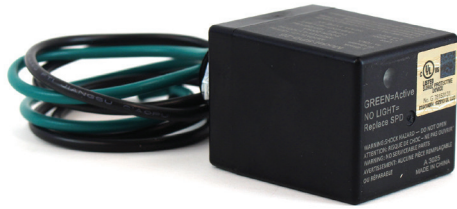
- Reversible Door Hinges reduce installation fitment problems.
- Wide Swing Door (greater than 180°) provides easy access to connections, simplifying installation and service in tight spaces.
- LED Indicators illuminate when a fuse is missing or blown for at-a-glance fuse status (fusible models only).
- Plated Copper Hardware resists corrosion and ensures optimal conductivity and smooth operation.
- Powder-Coated Galvanized Steel enclosure resists corrosion and rust.

INSTALLATION

SIDE OPEN AC DISCONNECTS

Dial No.	Description	Dimensions			Quantity
		Height	Width	Depth	
76115	60A Non-Fusible Disconnect	7.5"	5"	2.6"	10
76125	30A Fusible Disconnect	8.6"	5.2"	2.9"	10
76135	60A Fusible Disconnect	8.6"	5.2"	2.9"	10

SURGE PROTECTIVE DEVICE



OVERVIEW

Dial® Compact Surge Protective Device protects the electronics of today's modern HVAC equipment from power spikes, surges, and transients that can cause damage to sensors, control boards, and ECMs. The thermally protected MOV with gas discharge tube technology provides long term equipment protection and is backed by a limited lifetime warranty.

SPECIFICATIONS

- 120/240V / Single Phase
- 25kA Max Discharge Current
- 10kA Nominal Discharge Current
- 200kA Short Circuit Current
- NEMA 4 Rated Enclosure
- UL 1499 Listed / cULus Listed

FEATURES

- Gas Discharge Tube technology provides long life.
- Thermally Protected MOV is safe.
- LED Indicator provides visual status of the SPD.
- Compact Size is easy to fit in tight spaces and unobtrusive.
- Limited Lifetime Warranty on the SPD.
- 5 year / \$7,500 connected equipment warranty.

COMPACT SURGE PROTECTION

Dial No.	Description	Dimensions		
		Height	Width	Depth
73021	Split-Phase Surge Protective Device (SPD) - 25kA	1.4"	1.5"	2.5"



OVERVIEW

Dial® 60A Non-Fusible Surge-Guard Disconnect features an easy-to-use pullout with integrated surge protection, making installation as simple as a traditional disconnect. The pullout can be easily disconnected and reinstalled during routine service calls. Housed in a NEMA 3R rain and sleet resistant enclosure, LED indicators are visible through the front window, providing clear, at-a-glance confirmation of surge protection device (SPD) status without opening the enclosure.

SPECIFICATIONS

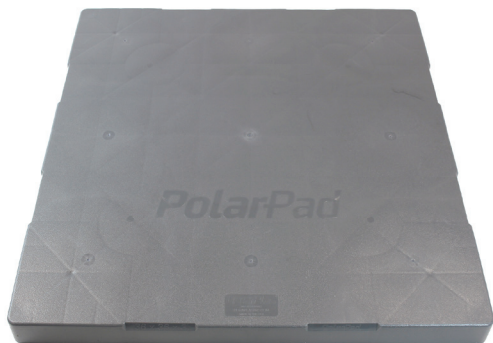
- 60A Non-Fusible
- 240V / Single Phase
- NEMA 3R Metallic Enclosure
- 25kA SCCR Rating
- 10kA Nominal Discharge Current
- UL / UL1449 Listed

FEATURES

- Integrated Type-2 SPD contained within the pullout.
- Fully Protected Internal SPD housed safely inside the disconnect.
- Standard Installation—installs like a traditional AC disconnect.
- No Additional Wiring Required for SPD functionality.
- Red/green LED Indicators provide clear, at-a-glance SPD status.
- Anti-UV Powder-Coated Steel side-open enclosure.

60A NON-FUSIBLE SURGE-GUARD

Dial No.	Description	Dimensions			Quantity
		Height	Width	Depth	
76140	60A Non-Fusible Disconnect with Type-2 Surge Protection in the Pullout	8.4"	5"	3"	6
76141	Replacement 60A Non-Fusible Surge Protection Pullout	—	—	—	—



OVERVIEW

PolarPad™ by DuraPlas is a durable, lightweight polyethylene base for HVAC and other light, ground-supported equipment. Injection molded with uniform underside ribbing for strength, it features a textured top and rounded edges that deliver a clean, concrete-like appearance. Ideal for air conditioning condensers, heat pumps, and pool filters, the PolarPad should be fully supported and installed on compacted soil, gravel, or a hard surface for optimal performance.

SPECIFICATIONS

Supports Over 40 lbs Per SQ. FT.

Injection-Molded Polyethylene

Reinforced with Uniform Ribbing

Inset Bottom Reduces Shifting

Designed for Full Bottom Support

Pad Size Molded into Sides

FEATURES

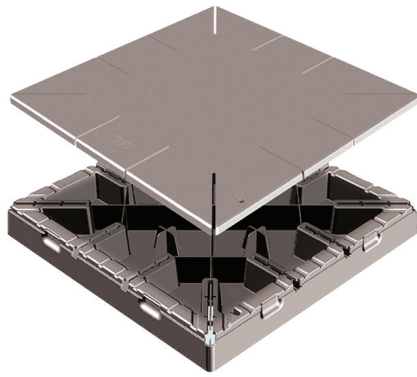
- **Lightweight Design** allows for easy, one-person installation with no additional equipment required.
- **Textured, Slip-Resistant Surface** with a self-leveling design.
- **UV, Weather, and Chemical Resistant**, including oils, refrigerants, and canine urine.
- **Engineered for Strength and Durability** with resistance to impact, cracking, and warping.

POLARPAD™

Dial No.	Dimensions			Weight lbs	Max. Load* lbs	Color
	Width	Length	Height			
84210	18"	38"	3"	8.9	1250	Black
84310	18"	38"	3"	8.9	1250	Gray
84220	24"	24"	2"	6	1210	Black
84320	24"	24"	2"	6	1210	Gray
84221	24"	24"	3"	7.4	1260	Black
84321	24"	24"	3"	7.4	1260	Gray
84222	24"	36"	3"	11	1300	Black
84322	24"	36"	3"	11	1300	Gray
84223	24"	48"	3"	13.6	1400	Black
84323	24"	48"	3"	13.6	1400	Gray
84230	30"	30"	2"	8.6	1250	Black
84330	30"	30"	2"	8.6	1250	Gray
84231	30"	30"	3"	12.4	1300	Black
84331	30"	30"	3"	12.4	1300	Gray
84232	30"	40"	3"	16.2	1700	Black
84332	30"	40"	3"	16.2	1700	Gray
84233	32"	32"	2"	9.7	1480	Black
84333	32"	32"	2"	9.7	1480	Gray
84234	32"	32"	3"	13	1440	Black
84334	32"	32"	3"	13	1440	Gray

Dial No.	Dimensions			Weight lbs	Max. Load* lbs	Color
	Width	Length	Height			
84235	36"	36"	2"	12.3	1540	Black
84335	36"	36"	2"	12.3	1540	Gray
84236	36"	36"	3"	16.1	1500	Black
84336	36"	36"	3"	16.1	1500	Gray
84237	36"	48"	3"	21.2	1850	Black
84337	36"	48"	3"	21.2	1850	Gray
84238	36"	54"	3"	26	1720	Black
84338	36"	54"	3"	26	1720	Gray
84239	38"	42"	3"	18.2	1700	Black
84339	38"	42"	3"	18.2	1700	Gray
84240	40"	40"	3"	18	1710	Black
84340	40"	40"	3"	18	1710	Gray
84241	45"	58"	3"	36.5	2050	Black
84341	45"	58"	3"	36.5	2050	Gray
84242	48"	48"	3"	32	1900	Black
84342	48"	48"	3"	32	1900	Gray
84250	52"	52"	3"	37.5	2100	Black
84350	52"	52"	3"	37.5	2100	Gray

*LOAD SHOULD BE DISTRIBUTED EVENLY ACROSS PAD SURFACE TO GIVE MAXIMUM ALLOWABLE LOAD RATING.



OVERVIEW

The PolarPad™ Hurricane HVAC Pad by DuraPlas is designed for high-wind and HVHZ (High Velocity Hurricane Zone) areas of Florida. Made from high-strength HDPE, it provides a durable base for HVAC condensers, while its lightweight design allows for one-person handling and installation and supports a range of condenser sizes.

SPECIFICATIONS

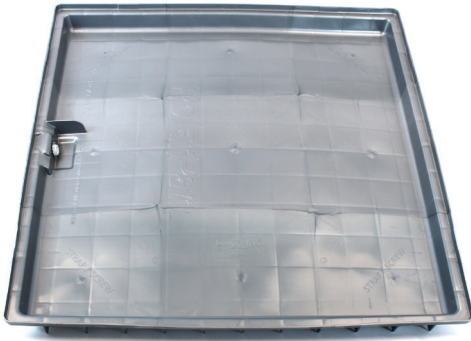
- High-Strength Polyethylene (HDPE)
- For High Wind Loads / HVHZ Areas
- Crack Resistant, Lightweight Construction
- Interlocking Lid
- 2-Piece Design Ships as 1 Complete Unit
- Stamped for Florida Usage

FEATURES

- Hands-Free Hardware Channel holds bolt upright during installation.
- Base Cavity holds up to 2 cu. ft. of sand or gravel.
- Slotted Bolt Areas keep moisture out of the cavity.
- Inspection Port along side of lid.
- UV Inhibitors added for long life.
- Engineered for Strength and Durability with resistance to impact, cracking, and warping.

POLARPAD™ HURRICANE HVAC PAD

Dial No.	Dimensions			Weight lbs	Color
	Width	Length	Height		
84255	40"	40"	5"	42	Gray
84355	40"	40"	5"	42	Black



OVERVIEW

The PolarPan™ Heavy Duty HVAC Pan by DuraPlas is a durable, rust and leak-proof replacement for metal drain pans, made from lightweight high-density polyethylene (HDPE). Uniform underside ribbing ensures the pan stays flat and stable during installation. Pre-installed, pre-plumbed fittings adjust easily for long or short setups, allowing faster, cleaner, and more reliable installations.

SPECIFICATIONS

- High-Density Polyethylene (HDPE)
- Temperature Resistant
- Drain Ports on Long and Short Sides
- Uniform Underside Ribbing Keeps Pan Flat
- Reinforced Sides, Corners, and Strap Areas
- Resists Cracking, Breaking, and Warping

FEATURES

- Rust-Proof high-density polyethylene (HDPE) provides a durable alternative to metal drain pans.
- Pre-Installed Drain Port Fittings on both long and short sides.
- Reinforced sides, corners, and uniform ribbed underside for stability and long-lasting performance.
- Engineered for Strength and Durability with resistance to impact, cracking, and warping.

POLARPAN™

Dial No.	Dimensions			Weight lbs	Color
	Width	Length	Height		
84263	36"	36"	3.5"	11.3	Silver
84266	64"	32"	3.5"	17.8	Silver
84267	72"	32"	3.5"	19.8	Silver
84261	30"	30"	3.5"	7.9	Silver
84262	32"	42"	3.5"	11.5	Silver

*LOAD SHOULD BE DISTRIBUTED EVENLY ACROSS PAD SURFACE TO GIVE MAXIMUM ALLOWABLE LOAD RATING.



OVERVIEW

The PolarPan™ Round HVAC Pan by DuraPlas is a durable, rust and leak-proof replacement for metal drain pans, made from high-grade, impact resistant polyethylene. Uniform ribbing keeps the pan flat and stable during installation. Elevated posts help keep the unit above potential moisture, while a recessed drain pocket positions the drain plug below the pan. A 1° taper toward the drain helps prevent standing water. Built-in channels hold bolts upright for easier installation, and slotted bolt areas help reduce moisture intrusion.

SPECIFICATIONS

- High-Grade, Impact Resistant Polyethylene
- Extreme Temperature Resistant
- 1° Taper Towards Drain
- Reinforced Uniform Ribbing
- Size Stamped into Pan
- Resists Cracking, Breaking, and Warping

FEATURES

- Rust-Proof high-grade polyethylene provides a durable alternative to metal drain pans.
- Recessed Pocket with a 1 degree taper for superior draining and room for equipment mounting.
- Pre-Plumbed with 1 inch CPVC Material.
- Engineered for Strength and Durability with resistance to impact, cracking, and warping.
- Easy Storage – Nestable design allows pans to stack even with pre-plumbed fittings installed.

POLARPAN™ ROUND HVAC PAN

Dial No.	Dimensions			Weight lbs	Color
	Width	Length	Height		
84270	24"	24"	3"	3.2	Silver (Electric)
84275	24"	24"	3"	3.2	Black (UL / Gas)

Dial[®] HVAC